






REVIEWED
By Tamara Salazar at 11:08 am, Dec 01, 2020

Worklist: 4625



<u>LAB_CASE</u>	<u>ITEM</u>	<u>ITEM_TYPE</u>	<u>DESCRIPTION</u>	
M2020-0952	16	BLOOD	AM 25/AM 26 Blood MultiDrug/THC Screen by LC-QQQ	
M2020-4577	2	BCK	AM 25/AM 26 Blood MultiDrug/THC Screen by LC-QQQ	
M2020-4627	3	BCK	AM 25/AM 26 Blood MultiDrug/THC Screen by LC-QQQ	
M2020-4630	2	BCK	AM 25/AM 26 Blood MultiDrug/THC Screen by LC-QQQ	
M2020-4670	1	BCK	AM 25/AM 26 Blood MultiDrug/THC Screen by LC-QQQ	
M2020-4728	1	BCK	AM 25/AM 26 Blood MultiDrug/THC Screen by LC-QQQ	
P2020-2452	1	BCK	AM 25/AM 26 Blood MultiDrug/THC Screen by LC-QQQ	
P2020-3160	1	BCK	AM 25/AM 26 Blood MultiDrug/THC Screen by LC-QQQ	
P2020-3448	1	BCK	AM 25/AM 26 Blood MultiDrug/THC Screen by LC-QQQ	
P2020-3453	1	BCK	AM 25/AM 26 Blood MultiDrug/THC Screen by LC-QQQ	
P2020-3454	1	BCK	AM 25/AM 26 Blood MultiDrug/THC Screen by LC-QQQ	
P2020-3456	1	BCK	AM 25/AM 26 Blood MultiDrug/THC Screen by LC-QQQ	
P2020-3457	1	BCK	AM 25/AM 26 Blood MultiDrug/THC Screen by LC-QQQ	
P2020-3458	1	BCK	AM 25/AM 26 Blood MultiDrug/THC Screen by LC-QQQ	
P2020-3461	1	BCK	AM 25/AM 26 Blood MultiDrug/THC Screen by LC-QQQ	
P2020-3462	1	BCK	AM 25/AM 26 Blood MultiDrug/THC Screen by LC-QQQ	
P2020-3463	1	BCK	AM 25/AM 26 Blood MultiDrug/THC Screen by LC-QQQ	
P2020-3480	1	BCK	AM 25/AM 26 Blood MultiDrug/THC Screen by LC-QQQ	
P2020-3505	1	BCK	AM 25/AM 26 Blood MultiDrug/THC Screen by LC-QQQ	

Worklist: 4625

\$

<u>LAB CASE</u>	<u>ITEM</u>	<u>ITEM TYPE</u>	<u>DESCRIPTION</u>	
P2020-3506	1	BCK	AM 25/AM 26 Blood MultiDrug/THC Screen by LC-QQQ	
P2020-3507	1	BCK	AM 25/AM 26 Blood MultiDrug/THC Screen by LC-QQQ	
P2020-3522	1	BCK	AM 25/AM 26 Blood MultiDrug/THC Screen by LC-QQQ	
P2020-3523	1	BCK	AM 25/AM 26 Blood MultiDrug/THC Screen by LC-QQQ	
P2020-3524	1	BCK	AM 25/AM 26 Blood MultiDrug/THC Screen by LC-QQQ	

Worklist: 4637

<u>LAB CASE</u>	<u>ITEM</u>	<u>ITEM TYPE</u>	<u>DESCRIPTION</u>	
M2020-4436	1	BCK	AM 25/AM 26 Blood MultiDrug/THC Screen by LC-QQQ	
M2020-4626	1	BCK	AM 25/AM 26 Blood MultiDrug/THC Screen by LC-QQQ	

AM# 25: Multi-Drug Screen in Blood by LC-MS/MS

§

Extraction Date: 11/24/20
Plate lot#: IDP-107-2-200511

Analyst: Sarah Pickle
Plate Expiration: 11/11/2020

Mobile phase A: 10mM Amm Form
0.5M Ammonium Hydroxide
Blank Blood Lot: Lampire 20L20725
LCMS-QQQ ID: 069901

Mobile phase B: 0.1% Formic Acid in MeOH
Ethyl Acetate LC Methanol
Column: Phenomenex Phenyl Hexyl (4.6x50mm, 2.6um)

Pre-Analytic:

- 1. Check levels of mobile phases and needle wash refill as needed. Ensure waste is not full.
- 2. Ensure correct column is installed and begin mobile phase flow allow to equilibrate ~ 30 minutes.

Analytic:

- 1. Remove standards, plate, controls, and samples from cold storage. Allow to reach room temperature.
- 2. Pipette **250 µL blood (calibrated pipette)** in wells of analytical (standards) plate. **Pipette ID: #16**
- 3. Place on shaking incubator at ambient temp., 900 rpm for 15 minutes.
- 4. Pipette **250 µL of 0.5 M ammonium hydroxide** in wells of analytical plate.
- 5. Place on shaking incubator at ambient temp., 900 rpm for 15 minutes.
- 6. Transfer **300 µL of blood+base** mixture to corresponding wells of SLE+ plate.
- 7. Apply positive pressure for approx. 10-15 seconds (or until no liquid remains on top of sorbent).
(Load at 85-100 PSI- Selector to the right)
- 8. Wait 5 minutes.
- 9. Add **900 µL ethyl acetate.**
- 10. Wait 5 minutes.
- 11. Apply positive pressure for approx. 10-15 seconds. *(12-15 PSI- Selector to the left).*
- 12. Add **900 µL ethyl acetate.**
- 13. Wait 5 minutes.
- 14. Apply positive pressure for approx. 10-15 seconds. *(12-15 PSI- Selector to the left).*
- 15. Remove plate containing eluate. Place on SPE Dry and evaporate to dryness at approx. 35°C.
- 16. Reconstitute in **100 µL 20% LC MeOH** and heat seal plate with foil. Place in autosampler and run worklist.

Post-Analytic

- 1. Open quantitation software and create a new quantitation batch.
- 2. Make necessary changes to integration limits
- 3. Evaluate samples, S/N of primary transition >5 and S/N of secondary transition >3 or evaluation of peak symmetry and resolution. Within +/- 2% or 0.1 min RT of administrative control. Calculated concentration 5 or greater or 2-5 for discretionary range.
- 4. Did all QCs pass for each analyte? Y / N _____
- 5. Central File Packet to include: LIMS Worklist, Method Checklist, Calibration and Control Reports

COMMENTS: *According to the analytical method, an external control was ran due to the expired plate.*

\$



Idaho State Police Forensic Services

AM #25 Blood Multi-Drug Screen by LCMS-QQQ And AM #28 Blood Multi-Drug Confirmatory Analysis by LCMS-QQQ---Panel 1

Methanol External Control Solution (Lot: 031820)

100 µL of 1mg/mL stock was added to each drug to 9700 µL of LC MeOH.

<i>Component</i>	<i>Source</i>	<i>Source Lot Number</i>	<i>Expiration Date</i>
Methanol (LCMS)	Fisher	193068	
O-desmethyl Tramadol	Cerilliant	FN01241702	04/30/2022
Amphetamine	Cerilliant	FE04061701	06/30/2022
Alprazolam	Cerilliant	FE07061604	07/31/2021
Prepared:	03/18/20		
Prepared By:	Sarah Pickle		
Expires:	03/18/21		

WS112320 Ⓢ 12/7/20

Blood External Control Solution (Lot: ~~WS031820~~ **WS031820**)

100 µL of methanol external control solution was added to 9900 µL of blood.

Approximately 100 ng/mL of each compound.

<i>Component</i>	<i>Source</i>	<i>Source Lot Number</i>
Negative Blood	Lampire	20K20702
Methanol External Control Solution		031820
Prepared:	11/23/20	
Prepared by:	Sophia Jackson	
Expires:	03/18/21	

AM #25 Multi-Drug Screen Results

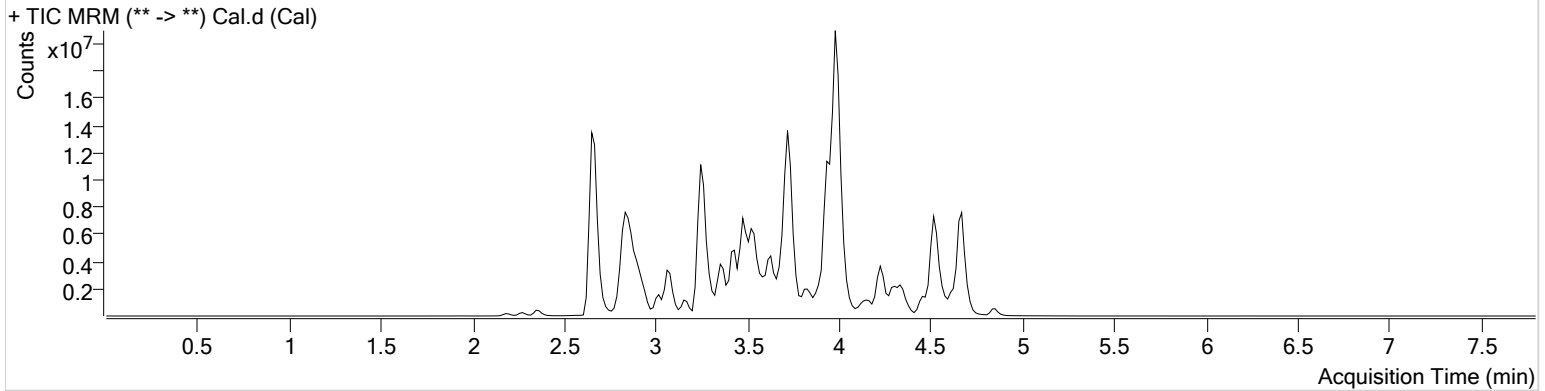
\$



Batch results D:\MassHunter\Data\2020\AM 25-26\112420 AM 25 26 SP\QuantResults\AM 25.batch.bin
Calibration Last Update 11/25/2020 10:08:04 AM

Instrument	Instrument 1	Data File	Cal.d
Type	Cal	Sample	Cal
Acq. Method	AM 25 MDS.m	Operator	Sarah Pickle
Sample Position	P2-H12	Comment	
Injection Volume	5		
Acq. Date-Time	11/24/2020 11:36:45 PM		

Sample Chromatogram



Name	RT	Resp.	S/N	S/N	ISTD Resp.	Calc. Conc.
6-MAM	2.801	25554	112.36	∞	474694	10.0000
7-aminoclonazepam	3.554	949965	∞	3371.40	3505008	10.0000
7-aminoflunitrazepam	3.768	1856338	605.56	423.92	3505008	10.0000
Acetyl Fentanyl	3.672	135300	110.82	157.03	21755359	10.0000
Acetyl Norfentanyl	2.840	201987	∞	201.50	21755359	10.0000
a-hydroxyalprazolam	4.516	104499	320.38	181.29	3505008	10.0000
alpha-hydroxymidazolam	4.545	1492114	663.48	333.42	3505008	10.0000
Alpha-PHP	3.696	2315087	257.31	525.09	21755359	10.0000
alpha-PVP	3.422	3723038	952.19	∞	2497062	10.0000
Alprazolam	4.611	1676159	∞	3221.84	15215811	10.0000
Amitriptyline	4.323	405358	∞	151.12	1120664	10.0000
Amphetamine	2.844	1672607	∞	∞	2497062	10.0000
Benzoylcegonine	3.385	700351	188.89	4162.13	310284	10.0000
Brompheniramine	3.934	18274	27.98	214.99	27039703	10.0000
Buprenorphine	4.006	345139	352.06	31597.32	1107193	10.0000
Bupropion	3.635	2894394	1111.50	314.00	7227389	10.0000
Carbamazepine	4.235	5720227	∞	3836.12	497815	10.0000
Carisoprodol	4.233	465640	458.60	64.26	2793171	10.0000
Chlordiazepoxide	4.658	885067	833.22	1307.89	15215811	10.0000
Chlorpheniramine	3.846	12809	∞	∞	27039703	10.0000
Citalopram	3.994	1176711	393.50	247.36	27039703	10.0000
Clomipramine	4.517	297176	3159.36	1640.11	27039703	10.0000
Clonazepam	4.456	944529	1222.28	148.59	15215811	10.0000
Clonazolam	4.376	661437	615.00	3004.09	15215811	10.0000
Cocaethylene	3.688	3020148	3162.22	5162.26	14226480	10.0000
Cocaine	3.475	3091794	8547193.29	46298.20	14226480	10.0000
Codeine	2.699	225516	976.40	∞	5154761	10.0000
Cyclobenzaprine	4.247	356178	290.20	17.80	1120664	10.0000
Desipramine	4.294	605049	892.03	431.19	1120664	10.0000
Dextromethorphan	3.970	729521	460.21	241.78	3786092	10.0000
Dextrorphan	3.295	1258773	224344.16	1182032.64	3786092	10.0000
Diazepam	4.859	764982	∞	∞	15215811	10.0000
Dihydrocodeine	2.667	568107	∞	644.41	5154761	10.0000
Diphenhydramine	3.940	2956797	871.38	1140.06	27039703	10.0000

Cal

\$

AM #25 Multi-Drug Screen Results



Name	RT	Resp.	S/N	S/N	ISTD Resp.	Calc. Conc.
Doxepin	4.045	445847	854.15	61.85	7655116	10.0000
Doxylamine	3.524	5473225	17383.46	10501.43	3786092	10.0000
EDDP	3.984	3030650	∞	7959.06	1963327	10.0000
Estazolam	4.536	3596436	10317.23	1319.15	15215811	10.0000
Etizolam	4.621	238689	700.53	3980.50	15215811	10.0000
Fentanyl	3.901	75394	73587.99	17827.12	5032792	10.0000
Flualprazolam	4.484	396281	739.60	4231.82	15215811	10.0000
Flunitrazepam	4.579	1676817	82532.42	240408.55	15215811	10.0000
Fluoxetine	4.258	227616	∞	14.90	521266	10.0000
Flurazepam	4.022	1210050	73167.37	2159.40	15215811	10.0000
Hydrocodone	2.881	712593	∞	32.67	5154761	10.0000
Hydromorphone	2.351	654011	14.90	∞	113320	10.0000
Imipramine	4.291	804525	1235.59	∞	1120664	10.0000
Ketamine	3.266	3121755	∞	226.43	7572597	10.0000
Lamotrigine	3.434	243242	286.49	91.12	27039703	10.0000
Levamisole	2.841	2046444	∞	316.25	14226480	10.0000
Levetiracetam	2.659	607854	148.42	625.00	27039703	10.0000
Lorazepam	4.439	541904	∞	657.05	15215811	10.0000
Maprotiline	4.323	410560	∞	205.19	1120664	10.0000
MDA	2.948	946590	∞	274.03	6685272	10.0000
MDEA	3.161	2011904	4984.42	302.75	6685272	10.0000
MDMA	3.024	2721900	573.99	977.05	6685272	10.0000
Meperidine	3.511	1703893	9.01	264.52	3786092	10.0000
Meprobamate	3.668	151145	112002.95	42.33	2793171	10.0000
Methadone	4.303	1989687	48470.40	524.33	1963327	10.0000
Methamphetamine	2.935	1029481	50.29	∞	6685272	10.0000
Methocarbamol	3.573	487590	∞	7013.93	1963327	10.0000
Methylphenidate	3.436	6341344	1262.01	∞	8867214	10.0000
Metoprolol	3.371	344686	327.25	2335.63	3786092	10.0000
Midazolam	4.484	287068	325.71	1821.44	15215811	10.0000
Mirtazapine	3.586	1600014	7543.38	1322.58	3786092	10.0000
Mitragynine	4.022	97029	28547.49	232.79	3786092	10.0000
Morphine	2.185	113977	∞	1010.83	113320	10.0000
Norbuprenorphine	3.746	23469	15770.35	11615.68	1107193	10.0000
Nordiazepam	4.708	1068150	∞	∞	15215811	10.0000
Norfentanyl	3.267	4533010	2549.73	327.70	21755359	10.0000
Norhydrocodone	2.867	16305	34.08	17.31	113320	10.0000
Norketamine	3.268	371225	151.96	3729.00	7572597	10.0000
Normeperidine	3.528	1285273	624.77	1021.23	27039703	10.0000
Noroxycodone	2.835	746853	75.21	∞	7572597	10.0000
Nortriptyline	4.325	171178	66145.11	54.33	1120664	10.0000
O-desmethyl-tramadol	2.869	5516495	65639.36	335.74	27039703	10.0000
Olanzapine	3.306	799823	∞	108.40	497815	10.0000
Oxazepam	4.521	1620584	∞	∞	11890189	10.0000
Oxycodone	2.833	1815047	∞	316.32	7572597	10.0000
Oxymorphone	2.271	454602	129.54	553.70	113320	10.0000
Paroxetine	4.254	22093	67.71	4391.55	521266	10.0000
Phenazepam	4.651	1025304	86886.18	1508.51	15215811	10.0000
Phencyclidine	3.819	2501360	4522.86	402.33	3786092	10.0000
Phentermine	3.102	618970	12.47	∞	8867214	10.0000
Phenytoin	4.141	903483	45516.91	3242.47	497815	10.0000
Promethazine	4.214	1251172	802.74	140.36	27039703	10.0000
Pseudoephedrine	2.660	31586013	∞	∞	6685272	10.0000
Quetiapine	4.161	1291924	253024.74	2936.61	26530428	10.0000
Sertraline	4.473	91366	39678.31	181.45	521266	10.0000
Sufentanil	4.145	47192	17297.53	15.09	21755359	10.0000
Tapentadol	3.375	2257168	598.07	1224.62	7572597	10.0000
Temazepam	4.674	2456710	∞	222.51	15215811	10.0000
Tramadol	3.356	6584534	∞	213.04	27039703	10.0000
Trazodone	4.008	1767636	381.82	236.85	7655116	10.0000

Cal

\$

AM #25 Multi-Drug Screen Results



Name	RT	Resp.	S/N	S/N	ISTD Resp.	Calc. Conc.
Venlafaxine	3.722	4062148	211.22	236.48	521266	10.0000
Zaleplon	4.351	2022694	650.73	894.35	26530428	10.0000
Zolpidem	3.735	5179019	571.31	2066683.61	26530428	10.0000
Zopiclone	3.670	378866	401.07	130.29	2007206	10.0000

\$

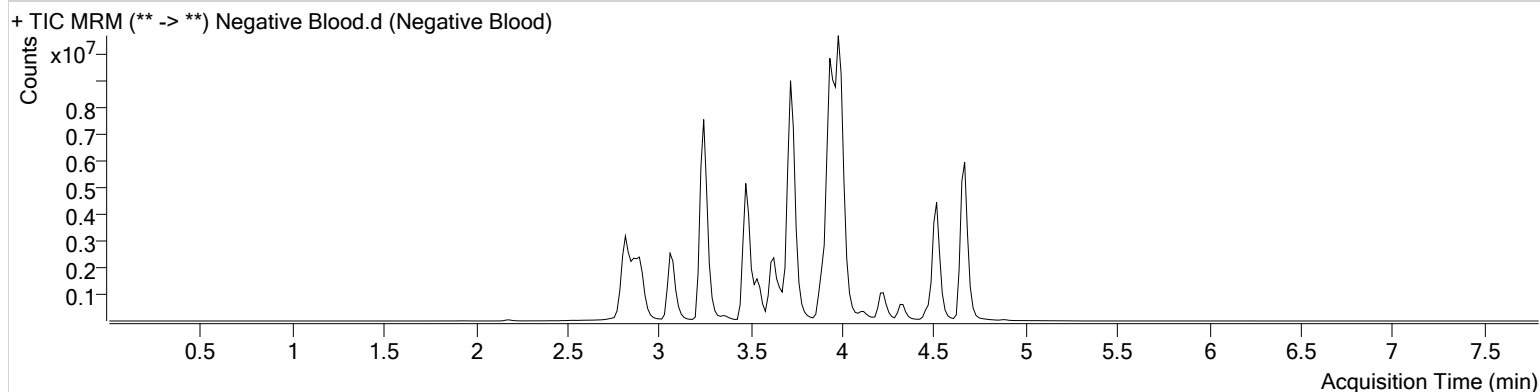
AM #25 Multi-Drug Screen Results



Batch results D:\MassHunter\Data\2020\AM 25-26\112420 AM 25 26 SP\QuantResults\AM 25.batch.bin
Calibration Last Update 11/25/2020 10:08:04 AM

Instrument	Instrument 1	Data File	Negative Blood.d
Type	Sample	Sample	Negative Blood
Acq. Method	AM 25 MDS.m	Operator	Sarah Pickle
Sample Position	P2-D12	Comment	
Injection Volume	5		
Acq. Date-Time	11/24/2020 11:45:19 PM		
Sample Info.			

Sample Chromatogram



\$

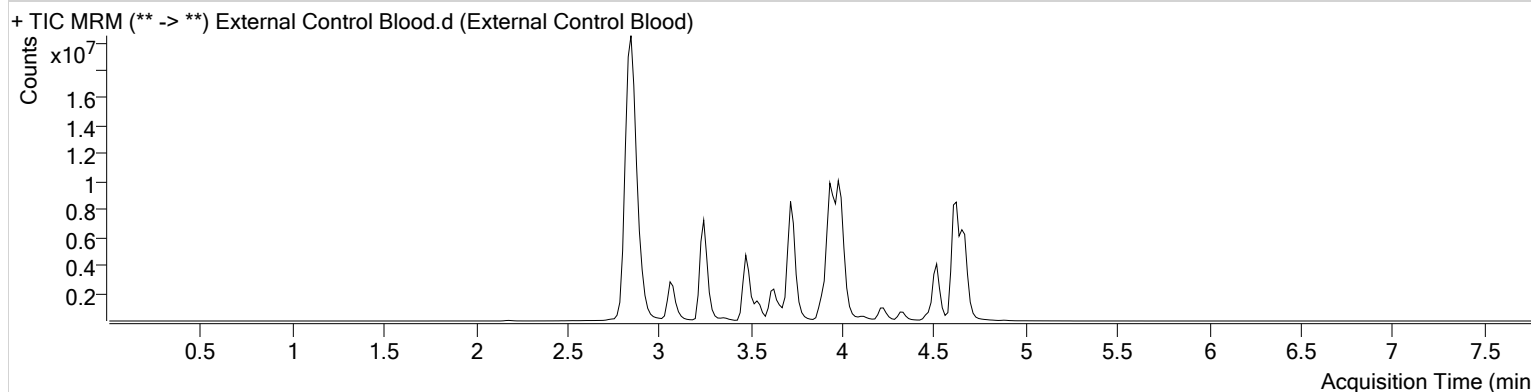


AM #25 Multi-Drug Screen Results

Batch results D:\MassHunter\Data\2020\AM 25-26\112420 AM 25 26 SP\QuantResults\AM 25.batch.bin
Calibration Last Update 11/25/2020 10:08:04 AM

Instrument	Instrument 1	Data File	External Control Blood.d
Type	Sample	Sample	External Control Blood
Acq. Method	AM 25 MDS.m	Operator	Sarah Pickle
Sample Position	P2-C12	Comment	
Injection Volume	5		
Acq. Date-Time	11/24/2020 11:53:43 PM		
Sample Info.			

Sample Chromatogram



Name	RT	Resp.	S/N	S/N	ISTD Resp.	Calc. Conc.
Alprazolam	4.626	12968415	∞	3639.98	15908503	74.0010
Amphetamine	2.844	12682640	∞	∞	2160858	87.6231
O-desmethyl-tramadol	2.869	33436239	591.38	895.61	28135416	58.2509

§

AM# 26: THC and Metabolites Screen in Blood by LC-MS/MS

Extraction Date: 11/24/20

Analyst: Sarah Pickle

Plate lot#: IDP-108-2-200723

Plate Expiration: 01/23/21

Mobile phase A: 10mM Ammonium Formate
0.1% Formic Acid in Water

Mobile phase B: 0.1% Formic acid in MeOH
MTBE Hexane

Blank Blood Lot: Lampire 20L20725

Column: Phenomenex Phenyl Hexyl (4.6x50mm: 2.6 um)

LCMS-QQQ ID: 069901

Pre-Analytic:

- 1. Check levels of mobile phases and needle wash refill as needed. Ensure waste is not full.
- 2. Ensure correct column is installed and begin mobile phase flow allow to equilibrate ~ 30 minutes.

Analytic:

- 1. Remove standards, plate, controls, and samples from cold storage. Allow to reach room temperature.
- 2. Pipette **1000 µL blood (calibrated pipette)** in wells of analytical (standards) plate. **Pipette ID: #27**
- 3. Place on shaking incubator at ambient temp., 900 rpm for 15 minutes.
- 4. Pipette **500 µL 0.1% formic acid** in wells of analytical plate.
- 5. Place on shaking incubator at ambient temp., 900 rpm for 15 minutes.
- 6. Transfer **800 µL of blood+base** mixture to corresponding wells of SLE+ plate.
- 7. Apply positive pressure for approx. 10-15 seconds (or until no liquid remains on top of sorbent).
(Load at 85-100 PSI- Selector to the right)
- 8. Wait 5 minutes.
- 9. Add **2.25 mL MTBE** (add in 3 increments of 750 µL).
- 10. Wait 5 minutes.
- 11. Apply positive pressure for approx. 10-15 seconds. *(12-15 PSI- Selector to the left).*
- 12. Add **2.25 mL hexane** (add in 3 increments of 750 µL).
- 13. Wait 5 minutes.
- 14. Apply positive pressure for approx. 10-15 seconds. *(12-15 PSI- Selector to the left).*
- 15. Remove plate containing eluate. Place on SPE Dry and evaporate to dryness at approx. 35°C.
- 16. Reconstitute in **100 µL 100% LCMS MeOH** and heat seal plate with foil. Place in autosampler and run worklist.

Post-Analytic

- 1. Create batch and process data.
- 2. Calculated sample concentration of 3 ng/mL or greater for THC and THC-OH, a calculated sample concentration of 10 ng/mL or greater for Carboxy-THC (analyst discretion between 5-10 ng/mL).
- 3. Retention time within +/- 2% or +/-0.100 min whichever is greater of the average retention time of the calibrators.
- 4. Did all QCs pass for each analyte? Y / N
- 5. Central File Packet to include: LIMS Worklist, Method Checklist, Calibration and Control Reports

COMMENTS: Due to THC-COOH internal standard peaks cutting off, the THC-OH internal standard was used for THC-COOH.

Due to interfering peak for cases M2020-3661, M2020-3765, M2020-3973, and P2020-2986 in THC-COOH that were originally ran with worklist 4585, these samples were reextracted and ran with this batch.

AM #26 Cannabinoids Screen Results

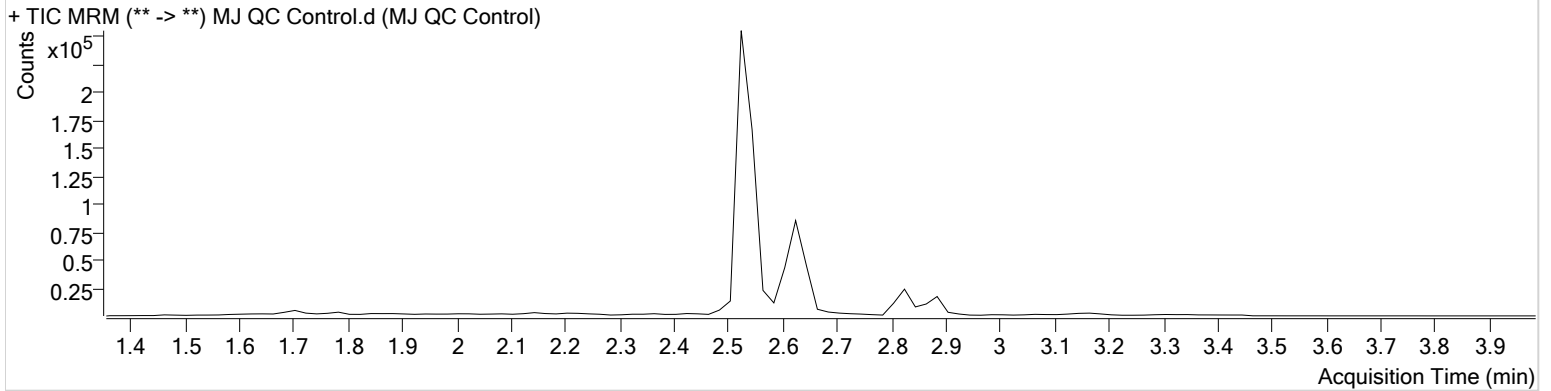
\$



Batch results D:\MassHunter\Data\2020\AM 25-26\112420 AM 25 26 SP\QuantResults\AM 26.batch.bin
Calibration Last Update 12/1/2020 10:06:36 AM

Instrument	Instrument 1	Data File	MJ QC Control.d
Type	Sample	Sample	MJ QC Control
Acq. Method	AM 26 THCS.m	Operator	Sarah Pickle
Sample Position	P1-H1	Comment	
Injection Volume	10		
Acq. Date-Time	11/24/2020 7:27:31 PM		
Sample Info.			

Sample Chromatogram



Name	RT	Resp.	ISTD Resp.	Final Conc.
THC	2.899	1225	29168	5.2584 ng/ml
THC-COOH	2.625	64746	511224	13.8162 ng/ml
THC-OH	2.532	5002	511224	4.6538 ng/ml

AM #26 Cannabinoids Screen Results

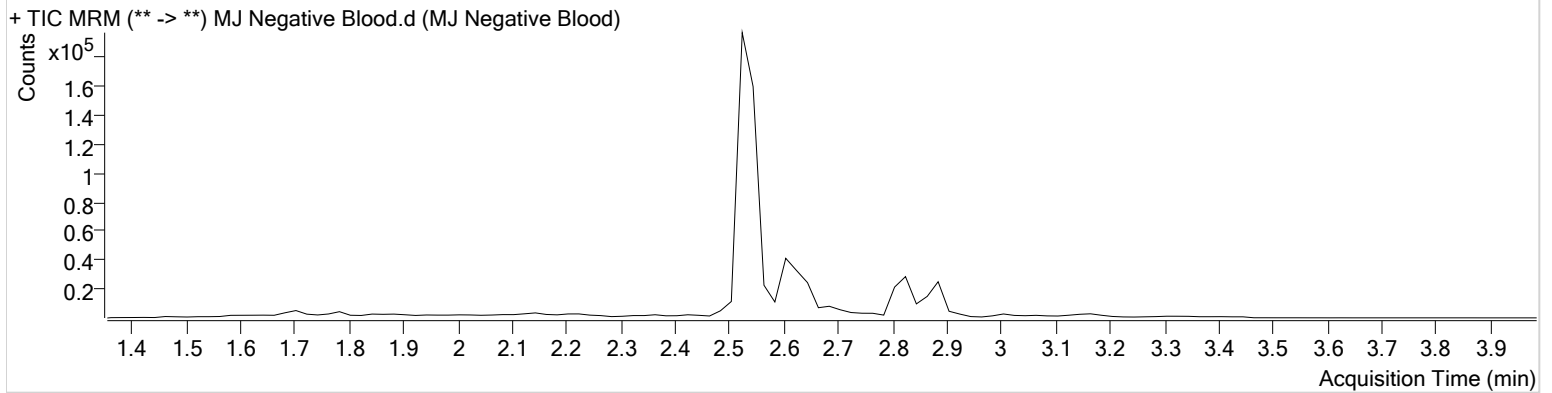
\$



Batch results D:\MassHunter\Data\2020\AM 25-26\112420 AM 25 26 SP\QuantResults\AM 26.batch.bin
Calibration Last Update 12/1/2020 10:06:36 AM

Instrument Type	Instrument 1 Sample	Data File	MJ Negative Blood.d
Acq. Method	AM 26 THCS.m	Sample	MJ Negative Blood
Sample Position	P1-A2	Operator	Sarah Pickle
Injection Volume	10	Comment	
Acq. Date-Time	11/24/2020 7:40:35 PM		
Sample Info.			

Sample Chromatogram



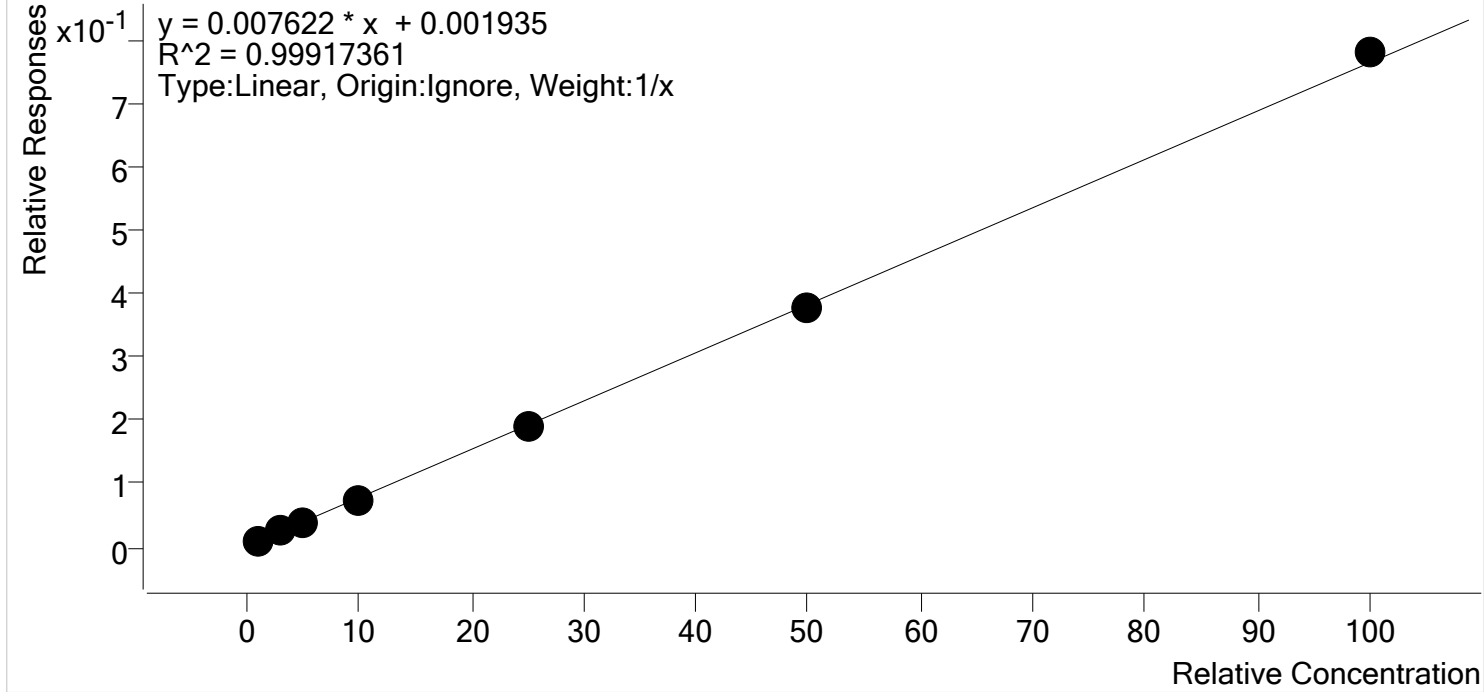
\$



AM #26 Cannabinoids Screen Calibration Curve Report

Batch results D:\MassHunter\Data\2020\AM 25-26\112420 AM 25 26 SP\QuantResults\AM 26.batch.bin
Last Cal. Update 12/1/2020 10:06 AM
Analyst Name ISP\datastor
Analyte THC **Internal Standard** THC-D3

THC - 7 Levels, 7 Levels Used, 7 Points, 7 Points Used, 0 QCs



Sample	Level	Enabled	Expected Concentration	Final Concentration	Accuracy
MJ Cal 1	1	✓	1.0	1.1	109.7
MJ Cal 2	2	✓	3.0	3.1	104.6
MJ Cal 3	3	✓	5.0	4.6	91.9
MJ Cal 4	4	✓	10.0	9.6	95.9
MJ Cal 5	5	✓	25.0	24.4	97.7
MJ Cal 6	6	✓	50.0	49.1	98.2
MJ Cal 7	7	✓	100.0	102.1	102.1

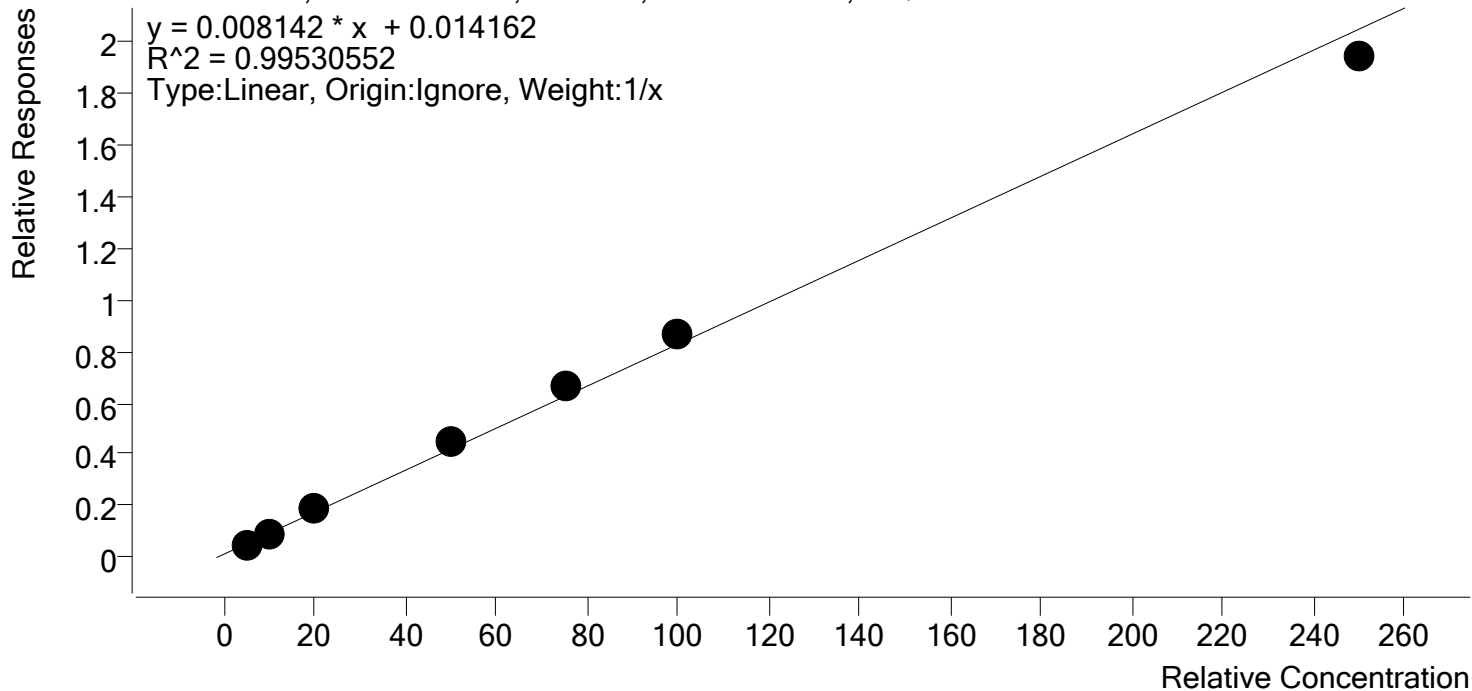
\$



AM #26 Cannabinoids Screen Calibration Curve Report

Batch results D:\MassHunter\Data\2020\AM 25-26\112420 AM 25 26 SP\QuantResults\AM 26.batch.bin
Last Cal. Update 12/1/2020 10:06 AM
Analyst Name ISP\datastor
Analyte THC-COOH **Internal Standard** THC-OH-D3

THC-COOH - 7 Levels, 7 Levels Used, 7 Points, 7 Points Used, 0 QCs



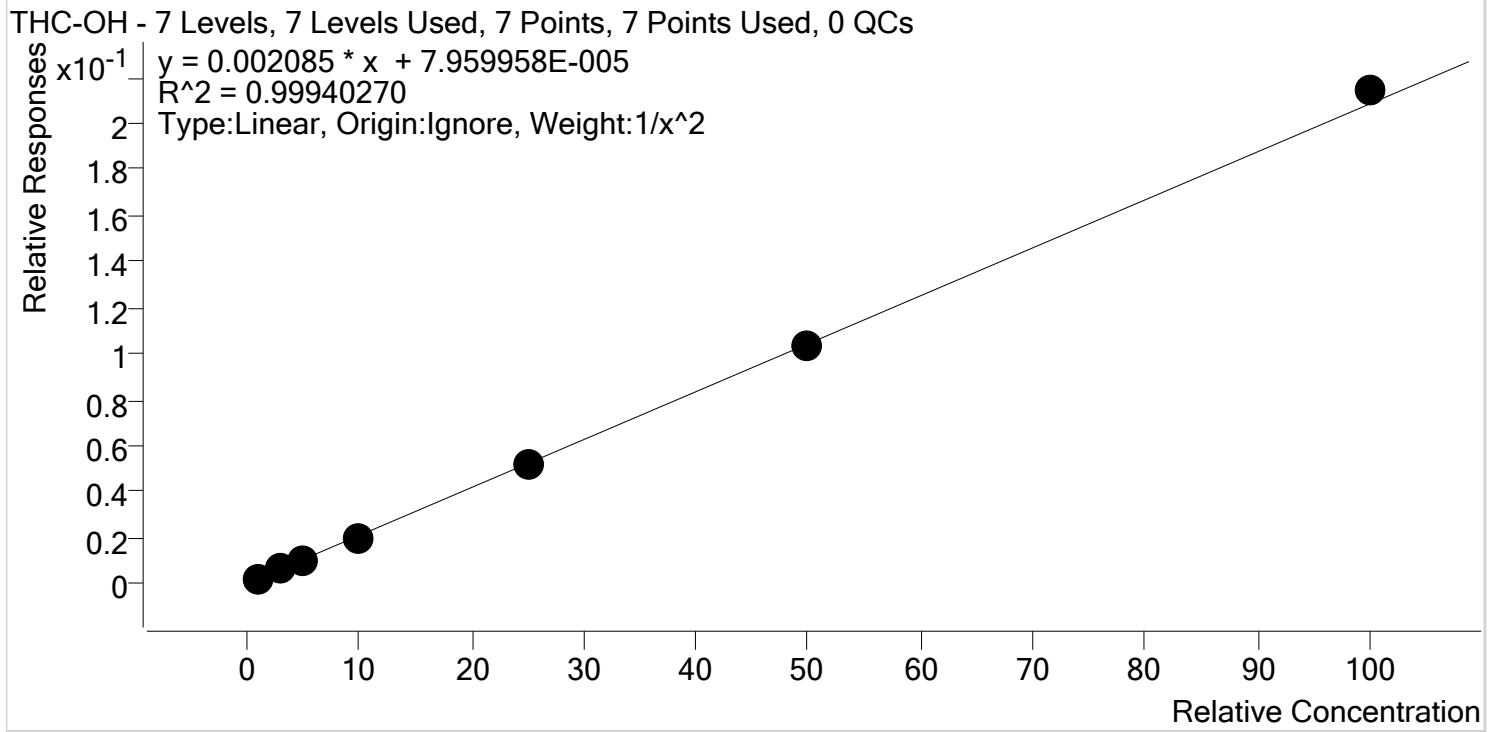
Sample	Level	Enabled	Expected Concentration	Final Concentration	Accuracy
MJ Cal 1	1	✓	5.0	4.4	88.3
MJ Cal 2	2	✓	10.0	8.9	89.0
MJ Cal 3	3	✓	20.0	22.1	110.7
MJ Cal 4	4	✓	50.0	53.0	106.0
MJ Cal 5	5	✓	75.0	79.7	106.3
MJ Cal 6	6	✓	100.0	104.9	104.9
MJ Cal 7	7	✓	250.0	236.9	94.8

\$



AM #26 Cannabinoids Screen Calibration Curve Report

Batch results D:\MassHunter\Data\2020\AM 25-26\112420 AM 25 26 SP\QuantResults\AM 26.batch.bin
Last Cal. Update 12/1/2020 10:06 AM
Analyst Name ISP\datastor
Analyte THC-OH **Internal Standard** THC-OH-D3



Sample	Level	Enabled	Expected Concentration	Final Concentration	Accuracy
MJ Cal 1	1	✓	1.0	1.0	99.7
MJ Cal 2	2	✓	3.0	3.1	102.1
MJ Cal 3	3	✓	5.0	5.0	99.9
MJ Cal 4	4	✓	10.0	9.6	96.2
MJ Cal 5	5	✓	25.0	24.9	99.7
MJ Cal 6	6	✓	50.0	49.8	99.7
MJ Cal 7	7	✓	100.0	102.7	102.7

AM #26 Cannabinoids Screen Results

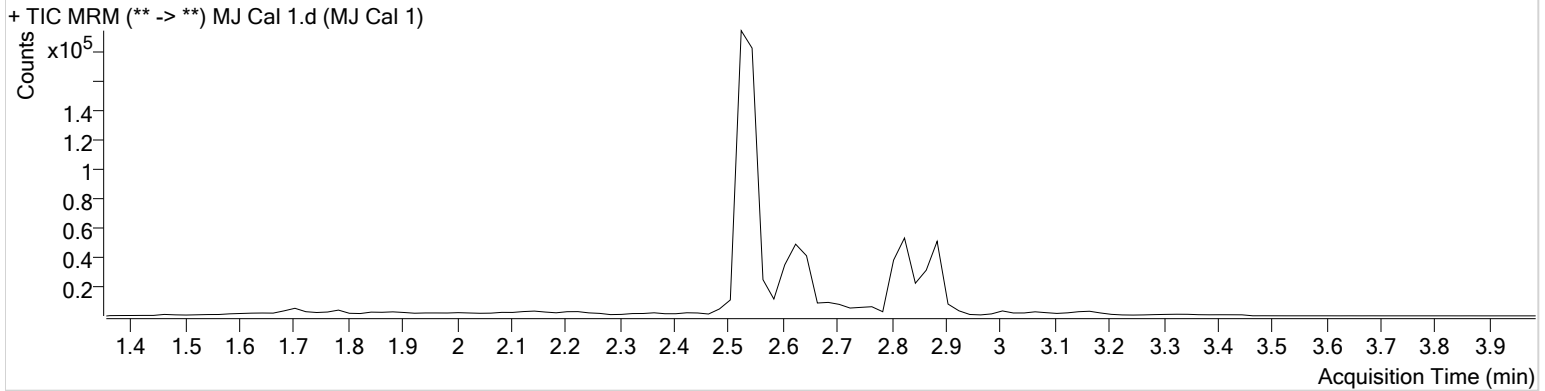
\$



Batch results D:\MassHunter\Data\2020\AM 25-26\112420 AM 25 26 SP\QuantResults\AM 26.batch.bin
Calibration Last Update 12/1/2020 10:06:36 AM

Instrument	Instrument 1	Data File	MJ Cal 1.d
Type	Cal	Sample	MJ Cal 1
Acq. Method	AM 26 THCS.m	Operator	Sarah Pickle
Sample Position	P1-A1	Comment	
Injection Volume	10		
Acq. Date-Time	11/24/2020 6:41:36 PM		

Sample Chromatogram



Name	RT	Resp.	ISTD Resp.	Final Conc.	
THC	2.899	877	85190	1.0970 ng/ml	Low
THC-COOH	2.625	24400	486787	4.4172 ng/ml	Low
THC-OH	2.532	1051	486787	0.9968 ng/ml	Low

AM #26 Cannabinoids Screen Results

\$

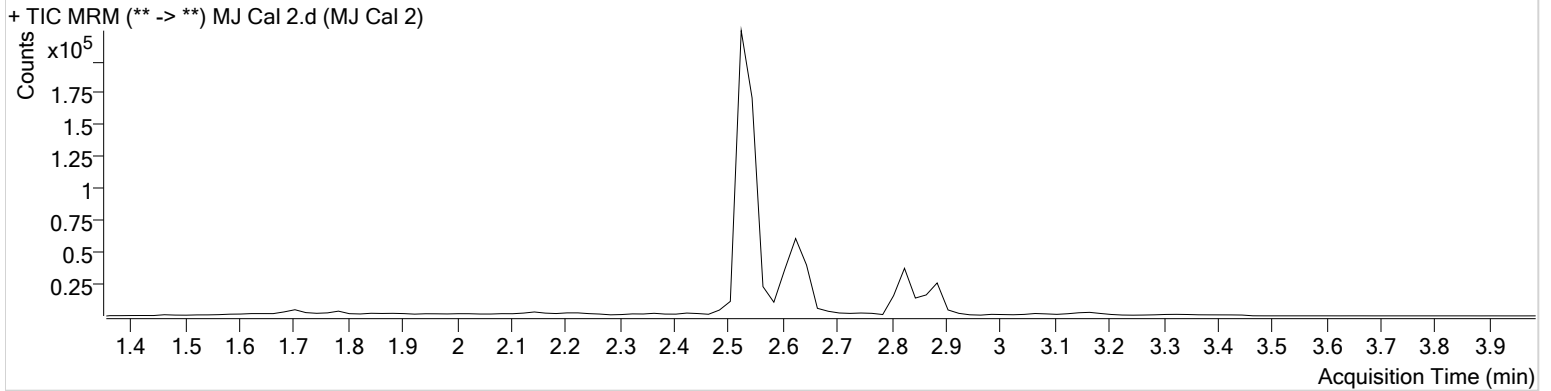


Batch results D:\MassHunter\Data\2020\AM 25-26\112420 AM 25 26 SP\QuantResults\AM 26.batch.bin
Calibration Last Update 12/1/2020 10:06:36 AM

Instrument	Instrument 1	Data File	MJ Cal 2.d
Type	Cal	Sample	MJ Cal 2
Acq. Method	AM 26 THCS.m	Operator	Sarah Pickle
Sample Position	P1-B1	Comment	
Injection Volume	10		
Acq. Date-Time	11/24/2020 6:48:18 PM		

Sample Info.

Sample Chromatogram



Name	RT	Resp.	ISTD Resp.	Final Conc.
THC	2.899	1151	44542	3.1368 ng/ml
THC-COOH	2.625	42636	492239	8.8992 ng/ml
THC-OH	2.532	3184	492239	3.0640 ng/ml

AM #26 Cannabinoids Screen Results

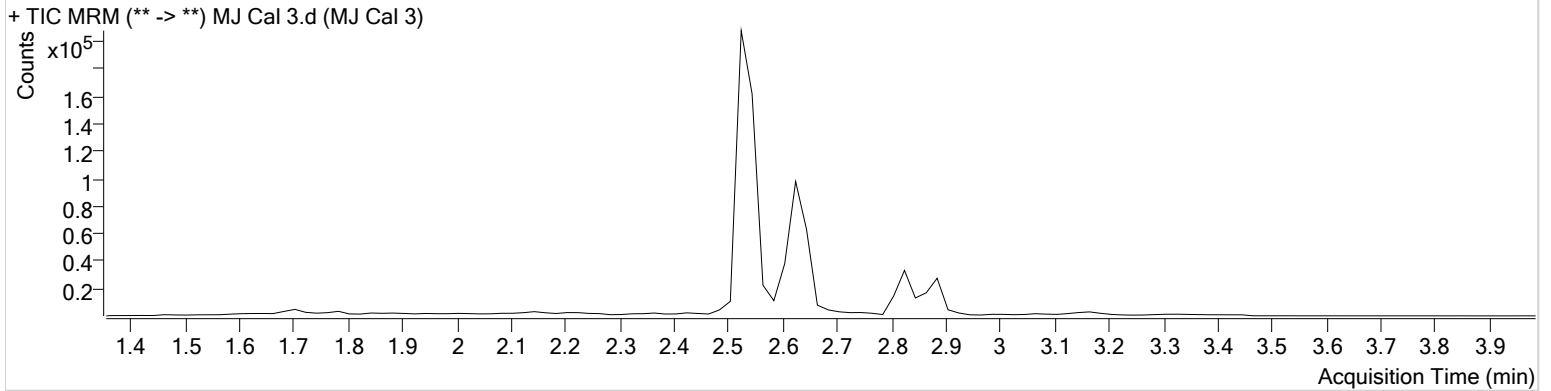
\$



Batch results D:\MassHunter\Data\2020\AM 25-26\112420 AM 25 26 SP\QuantResults\AM 26.batch.bin
Calibration Last Update 12/1/2020 10:06:36 AM

Instrument	Instrument 1	Data File	MJ Cal 3.d
Type	Cal	Sample	MJ Cal 3
Acq. Method	AM 26 THCS.m	Operator	Sarah Pickle
Sample Position	P1-C1	Comment	
Injection Volume	10		
Acq. Date-Time	11/24/2020 6:54:50 PM		

Sample Chromatogram



Name	RT	Resp.	ISTD Resp.	Final Conc.
THC	2.899	1718	46499	4.5928 ng/ml
THC-COOH	2.625	86851	446870	22.1322 ng/ml
THC-OH	2.532	4691	446870	4.9965 ng/ml

AM #26 Cannabinoids Screen Results

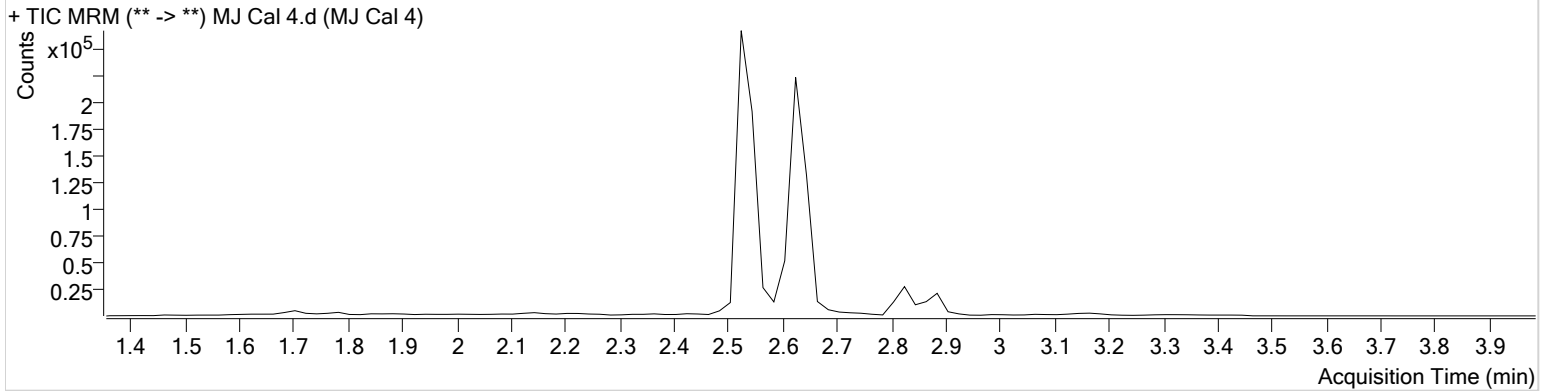
\$



Batch results D:\MassHunter\Data\2020\AM 25-26\112420 AM 25 26 SP\QuantResults\AM 26.batch.bin
Calibration Last Update 12/1/2020 10:06:36 AM

Instrument	Instrument 1	Data File	MJ Cal 4.d
Type	Cal	Sample	MJ Cal 4
Acq. Method	AM 26 THCS.m	Operator	Sarah Pickle
Sample Position	P1-D1	Comment	
Injection Volume	10		
Acq. Date-Time	11/24/2020 7:01:23 PM		
Sample Info.			

Sample Chromatogram



Name	RT	Resp.	ISTD Resp.	Final Conc.
THC	2.899	2613	34824	9.5925 ng/ml
THC-COOH	2.625	231182	518565	53.0173 ng/ml
THC-OH	2.532	10442	518565	9.6190 ng/ml

AM #26 Cannabinoids Screen Results

\$

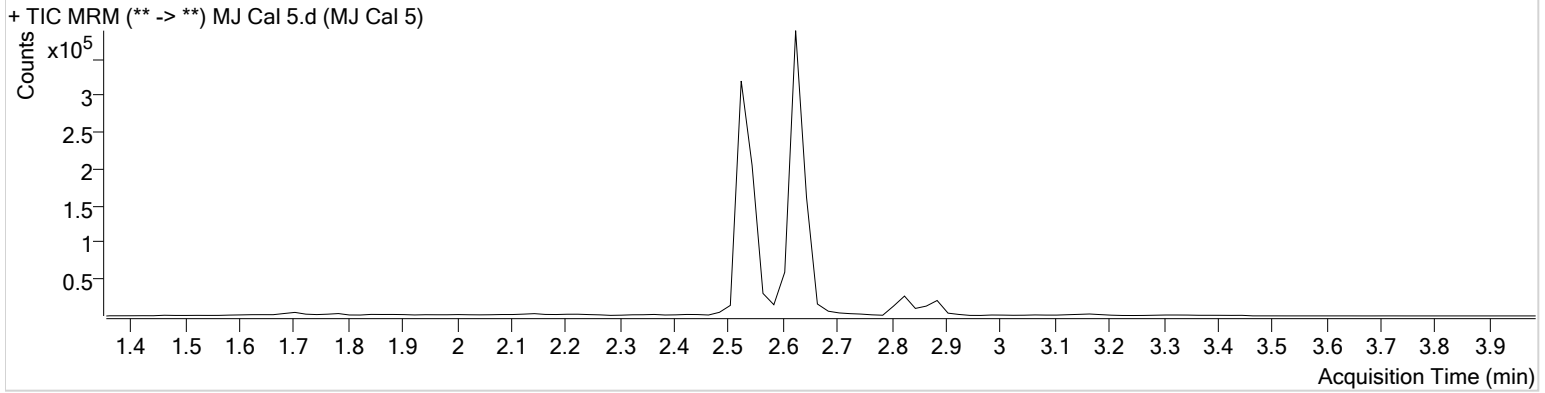


Batch results D:\MassHunter\Data\2020\AM 25-26\112420 AM 25 26 SP\QuantResults\AM 26.batch.bin
Calibration Last Update 12/1/2020 10:06:36 AM

Instrument	Instrument 1	Data File	MJ Cal 5.d
Type	Cal	Sample	MJ Cal 5
Acq. Method	AM 26 THCS.m	Operator	Sarah Pickle
Sample Position	P1-E1	Comment	
Injection Volume	10		
Acq. Date-Time	11/24/2020 7:07:55 PM		

Sample Info.

Sample Chromatogram



Name	RT	Resp.	ISTD Resp.	Final Conc.
THC	2.899	5880	31264	24.4235 ng/ml
THC-COOH	2.625	325404	490633	79.7223 ng/ml
THC-OH	2.532	25531	490633	24.9173 ng/ml

AM #26 Cannabinoids Screen Results

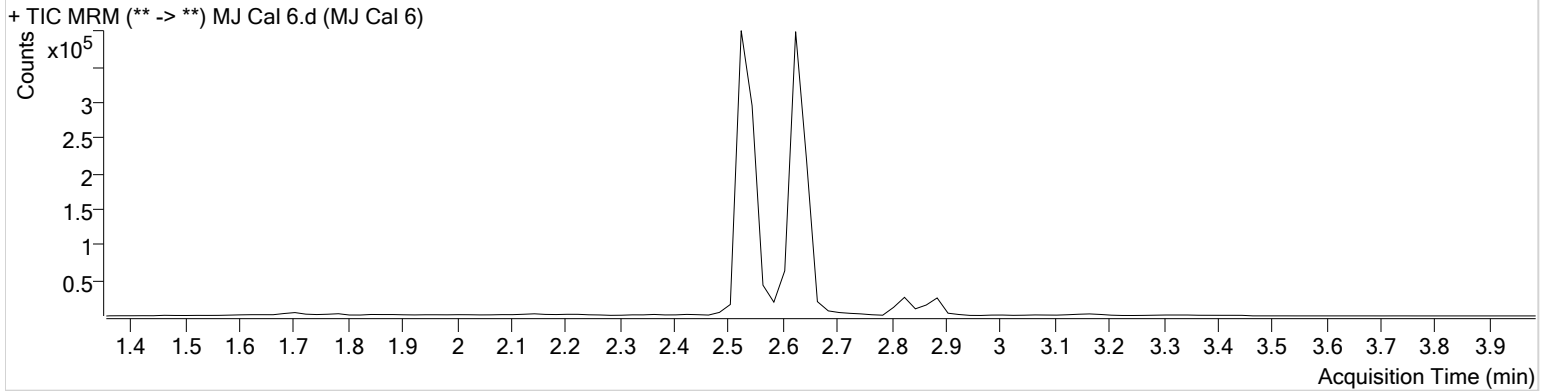
\$



Batch results D:\MassHunter\Data\2020\AM 25-26\112420 AM 25 26 SP\QuantResults\AM 26.batch.bin
Calibration Last Update 12/1/2020 10:06:36 AM

Instrument	Instrument 1	Data File	MJ Cal 6.d
Type	Cal	Sample	MJ Cal 6
Acq. Method	AM 26 THCS.m	Operator	Sarah Pickle
Sample Position	P1-F1	Comment	
Injection Volume	10		
Acq. Date-Time	11/24/2020 7:14:27 PM		
Sample Info.			

Sample Chromatogram



Name	RT	Resp.	ISTD Resp.	Final Conc.
THC	2.899	12046	32020	49.1073 ng/ml
THC-COOH	2.625	437635	503997	104.9131 ng/ml
THC-OH	2.532	52407	503997	49.8292 ng/ml

AM #26 Cannabinoids Screen Results

\$

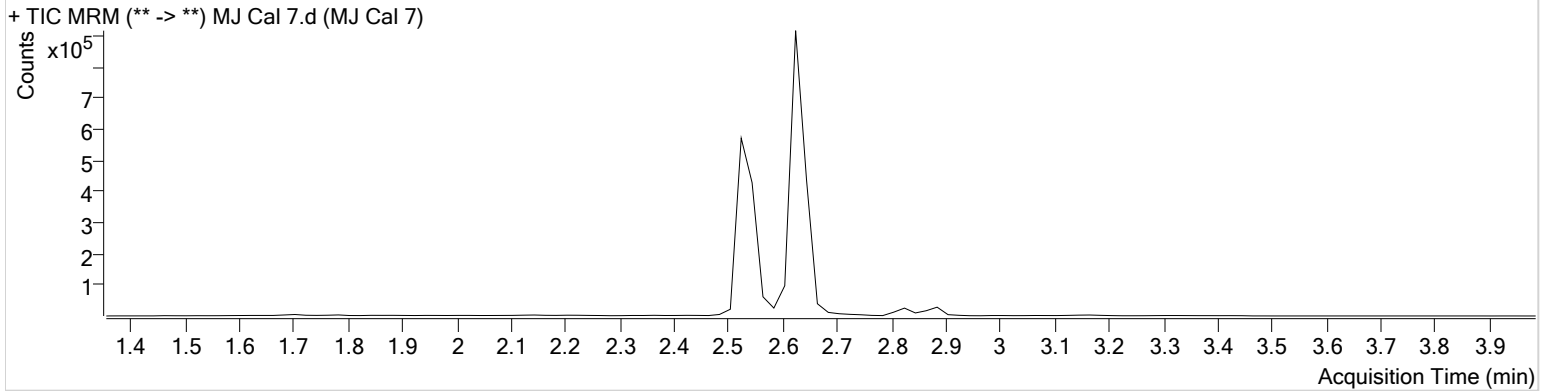


Batch results D:\MassHunter\Data\2020\AM 25-26\112420 AM 25 26 SP\QuantResults\AM 26.batch.bin
Calibration Last Update 12/1/2020 10:06:36 AM

Instrument	Instrument 1	Data File	MJ Cal 7.d
Type	Cal	Sample	MJ Cal 7
Acq. Method	AM 26 THCS.m	Operator	Sarah Pickle
Sample Position	P1-G1	Comment	
Injection Volume	10		
Acq. Date-Time	11/24/2020 7:20:59 PM		

Sample Info.

Sample Chromatogram



Name	RT	Resp.	ISTD Resp.	Final Conc.
THC	2.899	21303	27321	102.0500 ng/ml
THC-COOH	2.625	960214	494214	236.8987 ng/ml
THC-OH	2.532	105919	494214	102.7438 ng/ml